

DESCRIPTION

PMI MODEL P1T-9D25G-90-T-SFF-5W IS AN ABSORPTIVE , HIGH SPEED, MEDIUM POWER, SINGLE POLE SINGLE THROW SOLID STATE SWITCH CAPABLE OF SWITCHING WITHIN 25 ns. THE FREQUENCY RANGE IS 9.25 GHz (+/- 30 MHz). THIS SWITCH HAS > 80 dB ISOLATION.

SPECIFICATIONS

- FREQUENCY RANGE: _____ 9.25 GHz (+/- 30 MHz)
- ISOLATION: _____ 80 dB MIN
- INSERTION LOSS: _____ 1.5 dB GOAL, 2.0dB MAX
- VSWR IN / OUT: _____ 1.9:1 MAX
- INPUT POWER (PEAK): _____ +37 dBm MAX
- INPUT POWER (OPERATING): _____ +33 dBm CW MAX
- RISE/FALL TIME: _____ 10 ns MAX
- Delay ON / OFF: _____ 25 ns MAX
- DC VOLTAGE: _____ +5 V @ 120mA MAX
-12 V @ 100mA MAX
- CONTROL SIGNAL: _____ TTL COMPATIBLE
- CONNECTORS IN/OUT: _____ SMA (F)
- FINISH: _____ GOLD PLATED

TTL COMPATIBLE TRUTH TABLE	
CTL 1	STATE
0	J1-J2 Isolation
1	J1-J2 Insertion Loss

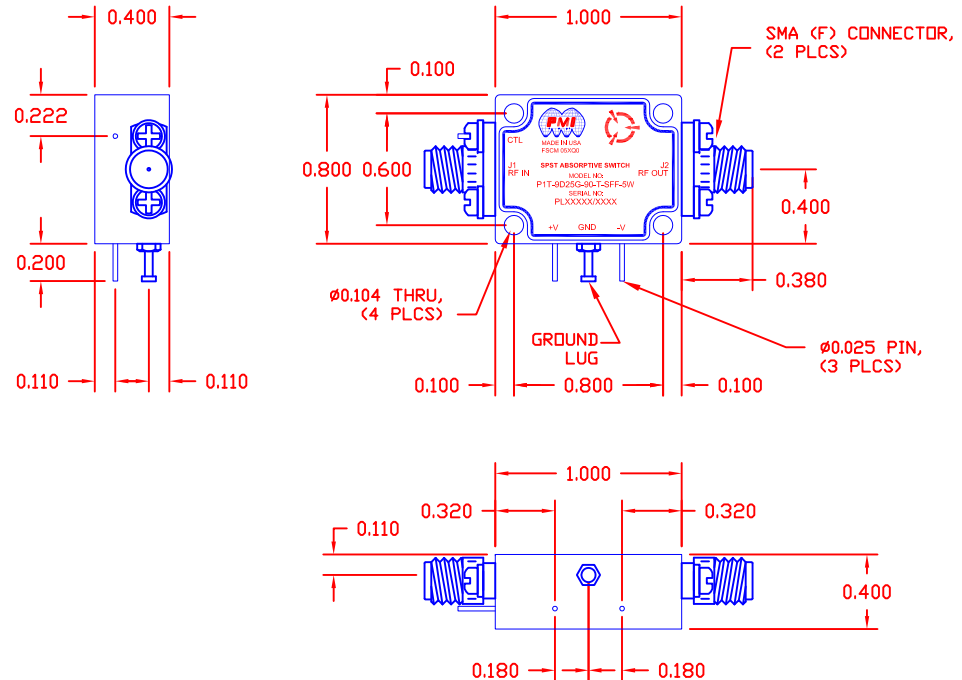
ENVIRONMENTAL RATINGS

- TEMPERATURE: _____ -40°C TO +85°C (OPERATING)
-55°C TO +125°C (STORAGE)
- HUMIDITY: _____ MIL-STD-202F, METHOD 103B COND. B
- SHOCK: _____ MIL-STD-202F, METHOD 213B COND. B
- VIBRATION: _____ MIL-STD-202F, METHOD 204D COND. B
- ALTITUDE: _____ MIL-STD-202F, METHOD 105C COND. B
- TEMPERATURE CYCLE: _____ MIL-STD-202F, METHOD 107D COND. A

NOTE: SPECIFICATIONS WILL VARY OVER OPERATING TEMPERATURE
NOTE: THE ABOVE SPECIFICATIONS ARE SUBJECT TO CHANGE OR REVISION

ALL DIMENSIONS ARE IN INCHES
TOLERANCES:
X.XX ±0.020
X.XXX ±0.010

REVISIONS				
ZONE	REV.	DESCRIPTION	DATE	APPROVED
	1	ORIGINAL RELEASE	05/16/14	



PMI CONFIDENTIAL AND PROPRIETARY

PLANAR MONOLITHICS INDUSTRIES, INC.

7311-F GROVE ROAD
FREDERICK, MARYLAND 21704 USA
TEL: 301-662-5019 FAX: 301-662-1731
WEBSITE: www.pmi-rf.com
E-MAIL: sales@pmi-rf.com
ISO 9001 CERTIFIED



APPROVALS		DATE	TITLE		
DRAWN <i>afk</i>		05/16/14	PRODUCT FEATURE P1T-9D25G-90-T-SFF-5W		
CHECKED			SIZE A	FSCM NO. 05XQ0	DWG NO. 27022382
ISSUED			SCALE N: S		REV. 1
					SHEET 1 OF 1