

DESCRIPTION:

PLANAR MONOLITHICS INDUSTRIES MODEL NUMBER P2T-500M20G-50-T-5-12-SFF-1 IS A TERMINATED SINGLE POLE, TWO THROW SWITCH THAT OPERATES FROM 500MHZ TO 20.0 GHZ WHICH HANDLES +23DBM CW INPUT POWER. THE PORT TO PORT ISOLATION IS 50DB MINIMUM. THIS MODEL HAS LOW INSERTION LOSS WHILE STILL OFFERING A FAST SWITCHING SPEED OF 50NSEC MAXIMUM.

SPECIFICATIONS:

- FREQUENCY:..... 500MHZ TO 20.0 GHZ
- INSERTION LOSS:..... 2.8dB Maximum
- INPUT POWER:..... +23dBm CW MAXIMUM
- VSWR: 1.9:1 Maximum
- ISOLATION:.....50dB Minimum
- SWITCHING SPEED:..... 50nsec Maximum
- CONTROL: TTL Logic "0" = J1 to J2
TTL Logic "1" = J1 to J3
- DC VOLTAGE..... 80mA @ +5VDC Typical
80mA @ -12VDC Typical
- CONNECTORS..... SMA FEMALE
- POWER AND CONTROL EMI FILTERED SOLDER PINS
- SIZE:..... 1.00 X 1.00 X .500 (H)
- WEIGHT:..... 1.5 OZ. TYPICAL
- SEALING..... HERMETIC

ENVIRONMENTAL RATINGS

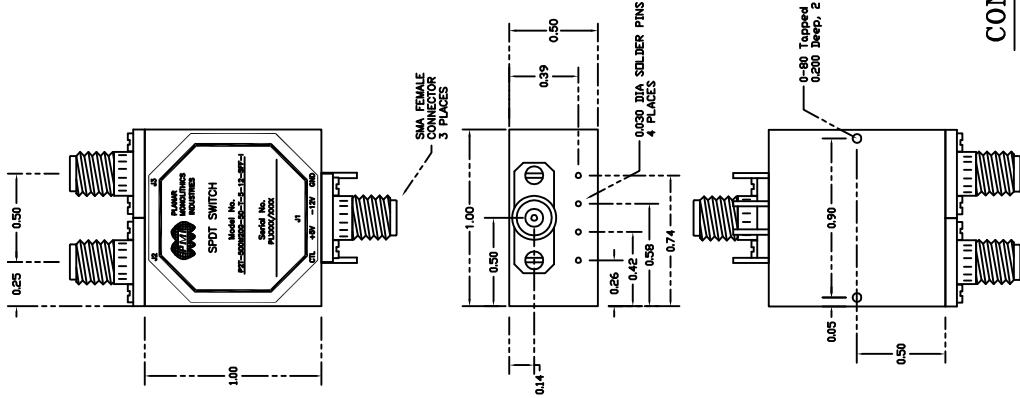
- TEMPERATURE: -45°C TO +90°C (OPERATING)
-54°C TO +125°C (STORAGE)
- HUMIDITY:..... MIL-STD-202F, METHOD 103B COND. B
- SHOCK:..... MIL-STD-202F, METHOD 213B COND. C
- VIBRATION: MIL-STD-202F, METHOD 204D COND. B
- SALT FOG MIL-STD-202F, METHOD 101D-EST COND. B
- THERMAL SHOCK..... MIL-STD-202F, METHOD 107D COND. A
- FUNGUS MIL-STD-810F, METHOD 508.5
- EMI / EMC..... MIL-STD-461E

Note: Environmental testing and ESS will be met, but actual testing is not done by PMI
Actual screening is available for an additional charge.

NOTE: THE ABOVE SPECIFICATIONS ARE SUBJECT TO CHANGE OR REVISION

ALL DIMENSIONS ARE IN INCHES
TOLERANCES:
X.XX ±0.010
X.XXX ±0.005

REVISIONS				
ZONE	REV.	DESCRIPTION	DATE	APPROVED
	A	ORIGINAL RELEASE	6/8/10	
	B	MOUNTING HOLE 0.200 DEEP	9/9/10	



CONFIDENTIAL AND PROPRIETARY

PART NO.	PLANAR MONOLITHICS INDUSTRIES FREDERICK, MARYLAND		
	PRODUCT FEATURE		
APPROVALS	DATE	TITLE	
DRAWN <i>K.M.</i>	6/9/10	P2T-500M20G-50-T-5-12-SFF-1	
CHECKED		SP2T SWITCH	
ISSUED		SIZE FSCM NO.	DWG NO.
		A 05XQ0	27013342
		SCALE N/S	SHEET 1 of 1