

## DESCRIPTION

PMI MODEL P2T-0R3G18G-70-T-55-SFF IS A SINGLE POLE DOUBLE THROW ABSORPTIVE SWITCH. THIS MODEL HAS THE FOLLOWING SPECIFICATIONS.

## SPECIFICATIONS

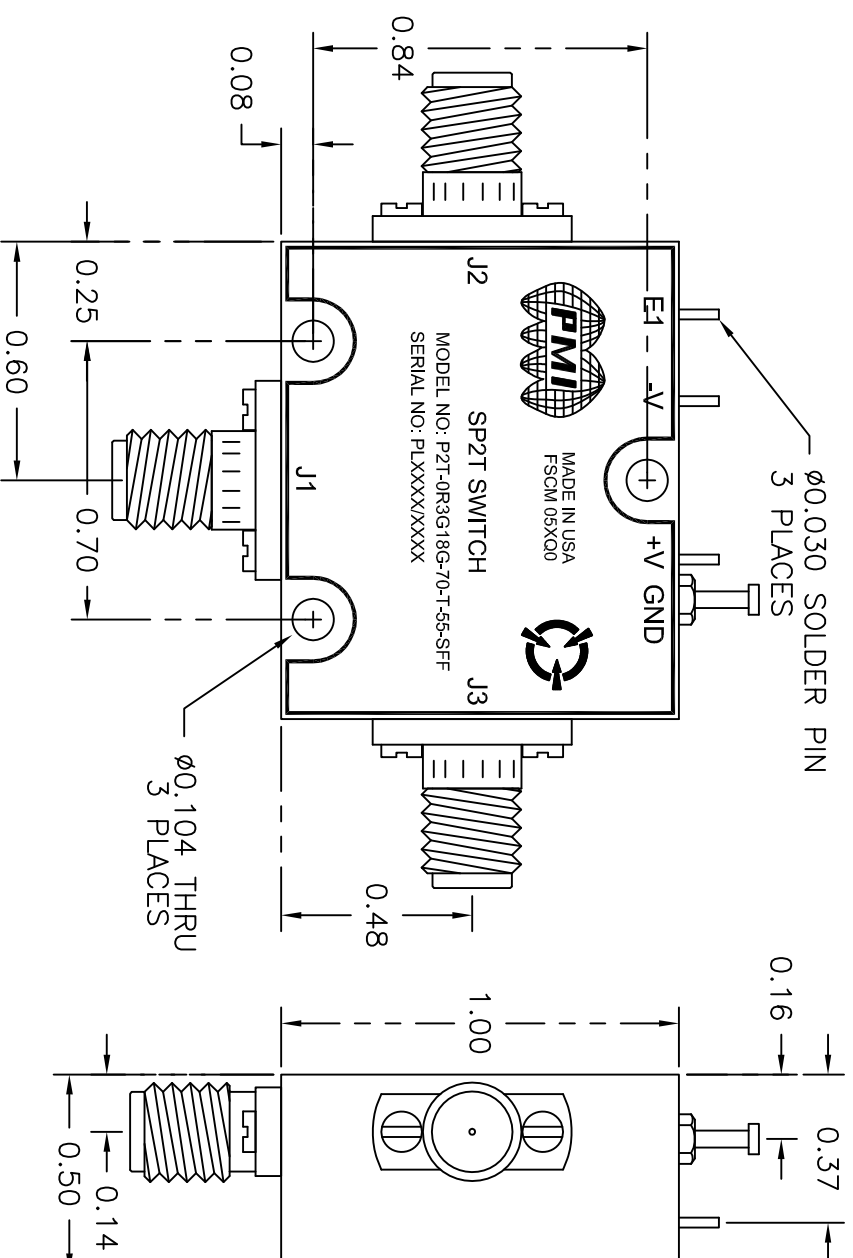
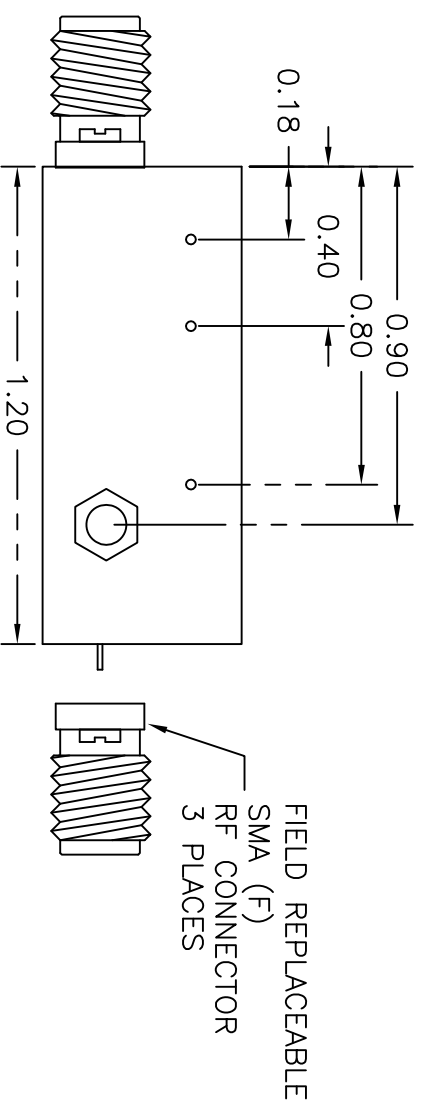
- FREQUENCY RANGE:..... 0.3 TO 18.0 GHZ
- INSERTION LOSS:..... 3.5 DB MAX
- ISOLATION:..... 70 DB MIN
- VSWR:..... IN / OUT: 2.0 : 1  
TERMINATED OUT: 2.0 : 1
- RISE TIME:..... 50 nsec MAX (10% RF TO 90% RF)
- FALL TIME:..... 50 nsec MAX (90% RF TO 10% RF)
- POWER HANDLING:..... +20 dBm CW MAX
- CONTROL:..... TTL LOGIC "0" = J1-J2 ON  
TTL LOGIC "1" = J1-J3 ON
- POWER SUPPLY:..... +5 V @ 65 mA MAX  
-5 V @ 50 mA MAX
- CONNECTORS:..... RF: SMA (F)  
CONTROL: SOLDER PIN
- SIZE:..... 1.20" (L) X 1.00" (W) X 0.50" (H)
- FINISH:..... GOLD PLATED

## ENVIRONMENTAL RATINGS

- TEMPERATURE:..... -55°C TO +85°C (OPERATING)  
-65°C TO +125°C (STORAGE)
- HUMIDITY:..... MIL-STD-202G, METHOD 103B COND. B
- SHOCK:..... MIL-STD-202G, METHOD 213B COND. B
- VIBRATION:..... MIL-STD-202G, METHOD 204D COND. B
- ALTITUDE:..... MIL-STD-202G, METHOD 105C COND. B
- TEMPERATURE CYCLE:..... MIL-STD-202G, METHOD 107G COND. A

NOTE: SPECIFICATIONS WILL VARY OVER OPERATING TEMPERATURE  
NOTE: THE ABOVE SPECIFICATIONS ARE SUBJECT TO CHANGE OR REVISION

REVISIONS		DATE	APPROVED
ZONE	REV	DESCRIPTION	
-	-	PRELIMINARY	2/11/11



## PLANAR MONOLITHICS INDUSTRIES, INC.

7311-F GROVE ROAD  
FREDERICK, MARYLAND 21704 USA  
TEL: 301-662-5019 FAX: 301-662-1731  
WEBSITE: [www.pmi-ri.com](http://www.pmi-ri.com)  
E-MAIL: [sales@pmi-ri.com](mailto:sales@pmi-ri.com)  
ISO 9001:2000 CERTIFIED



TITLE: PRODUCT FEATURE

P2T-0R3G18G-70-T-55-SFF

ALL DIMENSIONS ARE IN INCHES  
TOLERANCES: ±0.020  
X.XX ±0.010  
X.XXX  
WEIGHT: 1.5 oz. TYPICAL

APPROVALS	DATE	SIZE	FSCM NO.	DWG NO.	REV.
DRAWN: <i>JJD</i>	2/11/11	A	05X00	27015102	-
CHECKED:		SCALE	N:S	SHEET	1 OF 1
ISSUED:					